



SEE MORE. DO MORE.

DISMANTLING AND TREATMENT INFORMATION

WhereLAN III Product

Conforms to **Waste electrical and electronic equipment (WEEE)
2002/96/EC**

Category 3 product according Annex IA

Date: 10 October 2011

Zebra Technologies
2940 North 1st Street
San Jose, CA 95134
www.zebra.com

Reuse and treatment information

Material	Weight [g]	Weight [%]	Important Information
Waste Disposal (WD)			
Ceramic	0	0	
Subtotal	0	0	
Recovery Operations (RO)			
Leather	0	0	
Rubber / elastomere	14	0	
Sealant compound	0	0	
Foam	284	6	
Wood	0	0	
Subtotal	298	6	
Aluminium alloy cast			
Aluminium alloy cast	3005	65	
Aluminium alloy wrought	0	0	
Battery	0	0	
Cable	0	0	
Cable with plug	0	0	
Carton	907	20	
Copper	0	0	
Copper Alloy	0	0	
Gas	0	0	
Glass Optical	0	0	
Iron	0	0	
Liquid	0	0	
Magnesium alloy	0	0	
Magnetic material	0	0	
Metal nonferrous	0	0	
Paper	0	0	
Plastic	0	0	
Plug	0	0	
Printed circuit board	380	8	Remove printed circuit board (1)
Sintered material	0	0	
Steel	0	0	
Steel stainless	40	1	
Textile material	0	0	
Subtotal	4332	94	
Re-Use (RU)			
Subtotal			
Total weight	4630 g	100%	

Product identification and selective treatment information



31 cm x 26 cm x 4 cm

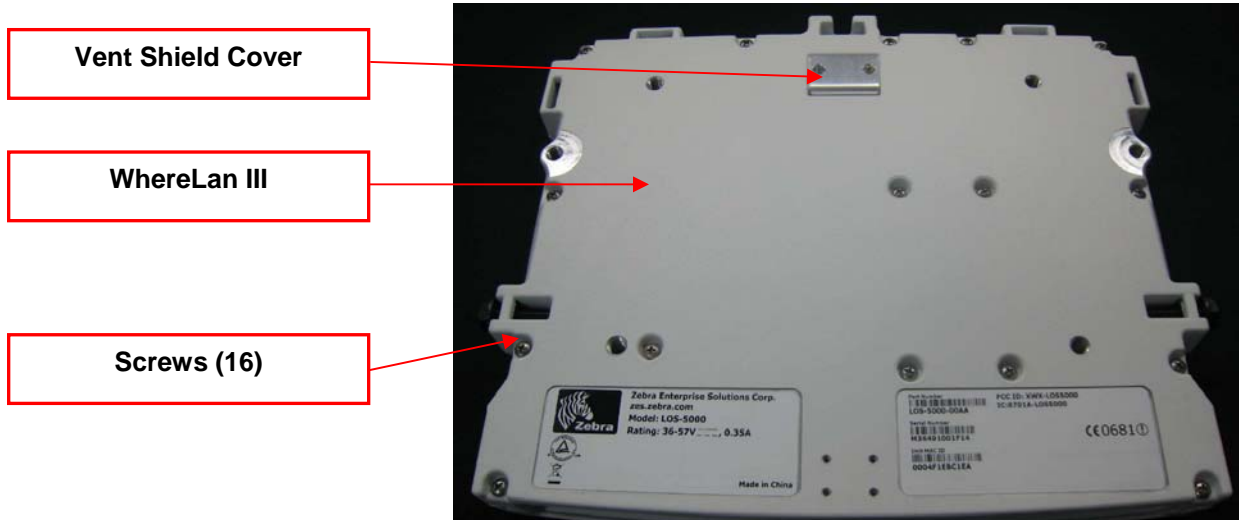


Product Description:

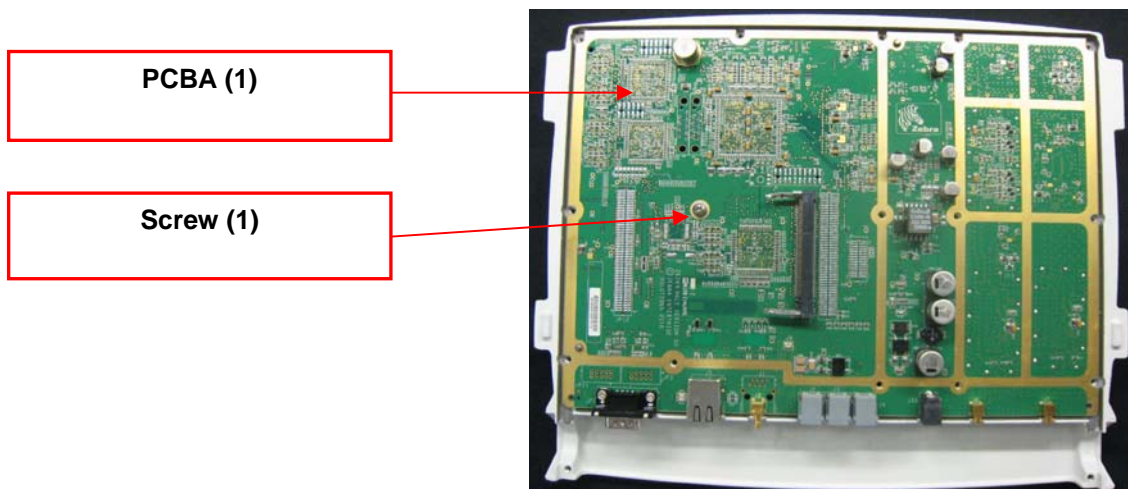
Zebra's Location Sensor with wired Ethernet connectivity. An ISO 24730-2 sensor, compliant with 802.3af PoE, allowing input power to be provided by compatible network switch. ZES antenna kit sold separately. Optional pole mounting bracket, 802.3af PoE injector, and 48 V-DC power supply also sold separately.

Dismantling Instructions

- A) Place the unit with the side that contains 16 screws. Remove the vent shield cover by unscrewing two screws. Unscrew the remaining 16 screws that secure the front and rear castings.

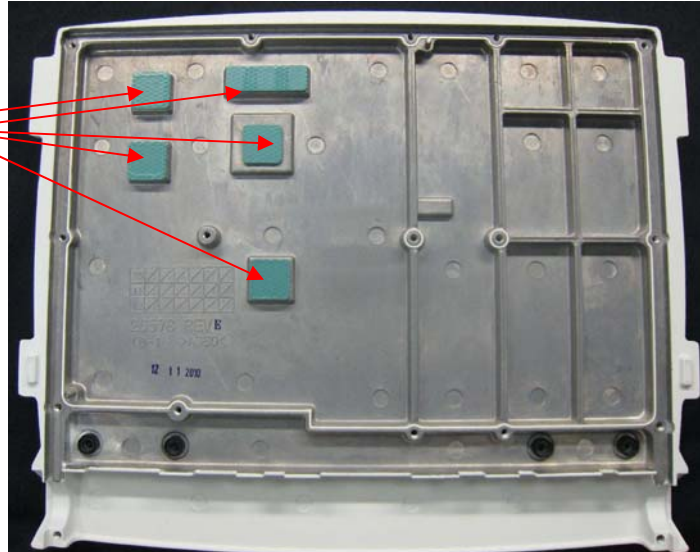


- B) Remove the PCBA from the unit by unscrewing one screw holding the board to the casting.



- C) Remove the 5 pieces of Thermal Interface Material found on the casting. This material is removed by peeling the material from the casting.

Thermal Interface Material



- D) Remove the LED Lens (4) by placing a punch from the back side and knocking the lens from the casting.

LED Lens (4)



- E) From the Rear Cover, remove the two M8 Screws and Nuts shown as follows:

M8 Screw and Washer (2)

