



SEE MORE. DO MORE.

# DISMANTLING AND TREATMENT INFORMATION

## WhereDome IV Product

Conforms to **Waste electrical and electronic equipment (WEEE)**  
**2002/96/EC**

Category 3 product according Annex IA

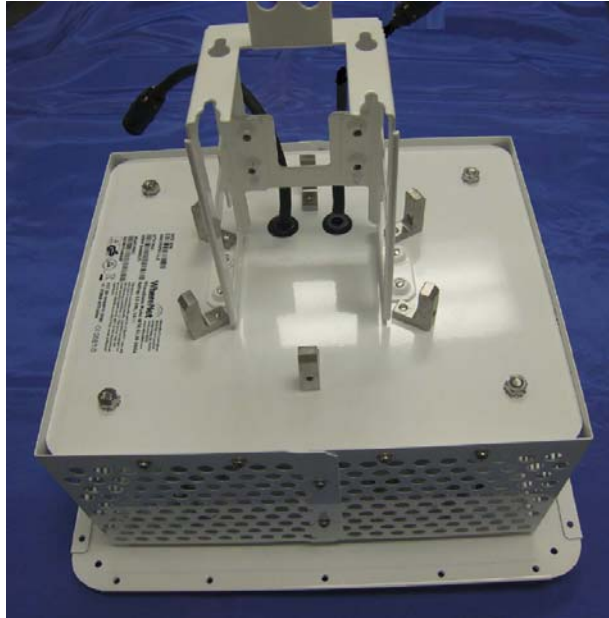
Date: 10 October 2011

Zebra Technologies  
2940 North 1<sup>st</sup> Street  
San Jose, CA 95134  
[www.zebra.com](http://www.zebra.com)

## Reuse and treatment information

Material	Weight [g]	Weight [%]	Important Information
<b>Waste Disposal (WD)</b>			
Ceramic	42.5	.7	
Subtotal	42.5	.7	
<b>Recovery Operations (RO)</b>			
Leather	0	0	
Rubber / elastomere	105.0	1.7	
Sealant compound	0	0	
Foam	454	7.5	
Wood	0	0	
Subtotal	559.0	9.2	
<b>Aluminium alloy cast</b>			
Aluminium alloy cast	1353.6	22.4	
Aluminium alloy wrought	1607.2	26.6	
Battery	0	0	
Cable	0	0	
Cable with plug	1162.2	19.2	Remove cables with plugs (11)
Carton	850.5	14.1	
Copper	0	0	
Copper Alloy	0	0	
Gas	0	0	
Glass Optical	0	0	
Iron	0	0	
Liquid	0	0	
Magnesium alloy	0	0	
Magnetic material	0	0	
Metal nonferrous	0	0	
Paper	0	0	
Plastic	0	0	
Plug	0	0	
Printed circuit board	280	4.6	Remove printed circuit boards (4)
Sintered material	0	0	
Steel	0	0	
Steel stainless	190	3.2	
Textile material	0	0	
Subtotal	5443.5	90.1	
<b>Re-Use (RU)</b>			
Subtotal	0	0	
<b>Total weight</b>	<b>6045 g</b>	<b>100%</b>	

## Product identification and selective treatment information



35.9 cm x 30.5 cm x 36.8 cm

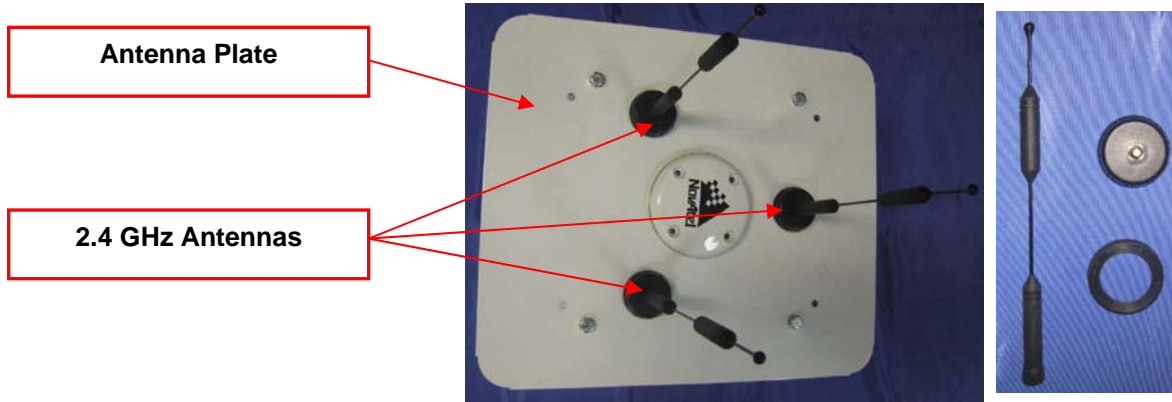
<b>Part Number:</b> WTK-5130-00AA			Zebra Enterprise Solutions 2940 N. 1st Street San Jose, CA 95134 408-473-8500 zes.zebra.com
<b>WhereTrack S/N:</b> VA4260800012		<b>WhereDome IV</b> Rating: 12-24V  , 1A	
<b>WhereTrack MAC:</b> 0004F17DF191		Contains WhereTrack Model WTK-5000	
<b>Wireless LAN MAC:</b> 008048546C7A			
		Made in the USA of imported components	

## Product Description:

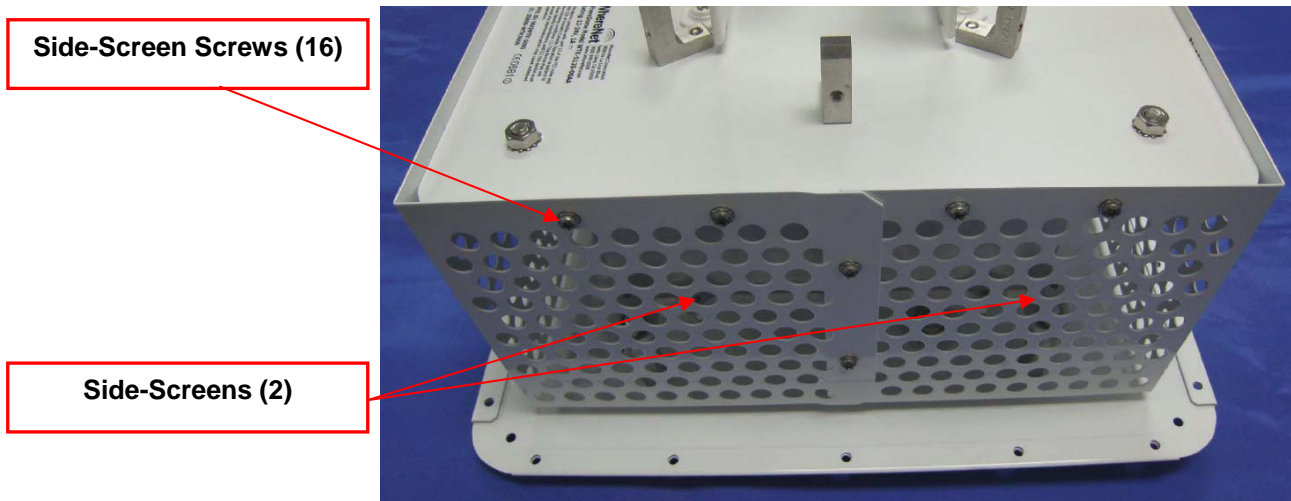
The WhereDome IV is a fully assembled product that mates to existing masts. It contains a WhereTrack controller, a mast plate (for interfacing to the mast), and ground plane (that allows for antenna mounting), three 2.4GHz antennas and cables, a GPS antenna and cable, a data communication and power cable and various misc hardware items (screws, standoffs, etc). The data communication cable connects to either the Ethernet or RS-485 port on the WhereTrack Controller.

# Dismantling Instructions

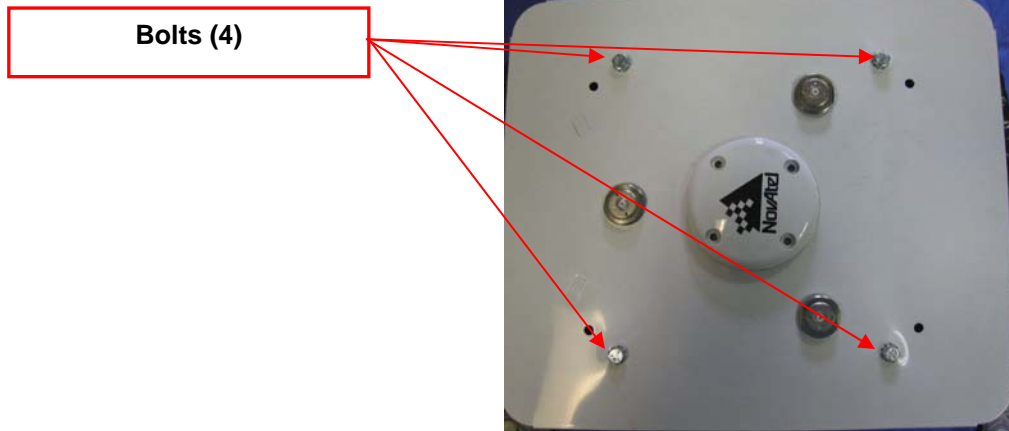
A) Remove 2.4 GHz antennas (3) from antenna plate by unscrewing from base.



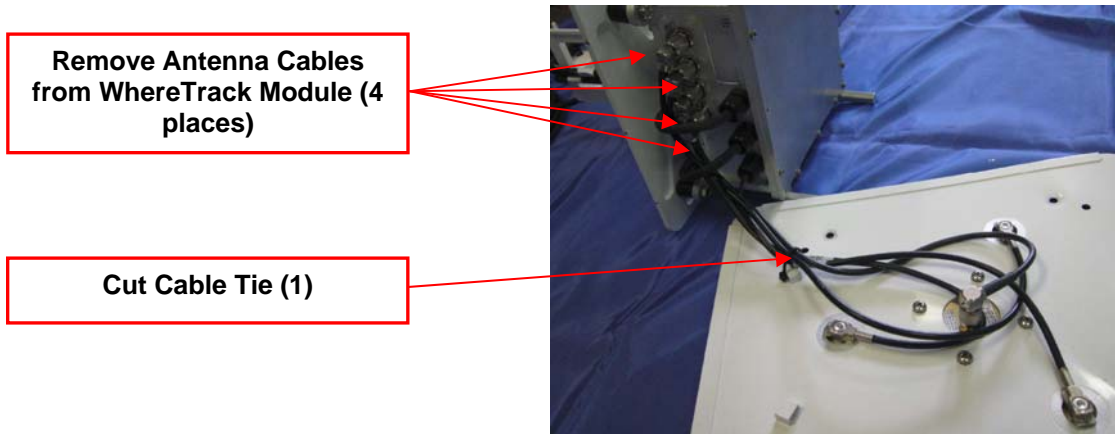
B) Remove side-screen held on by 16 screws.



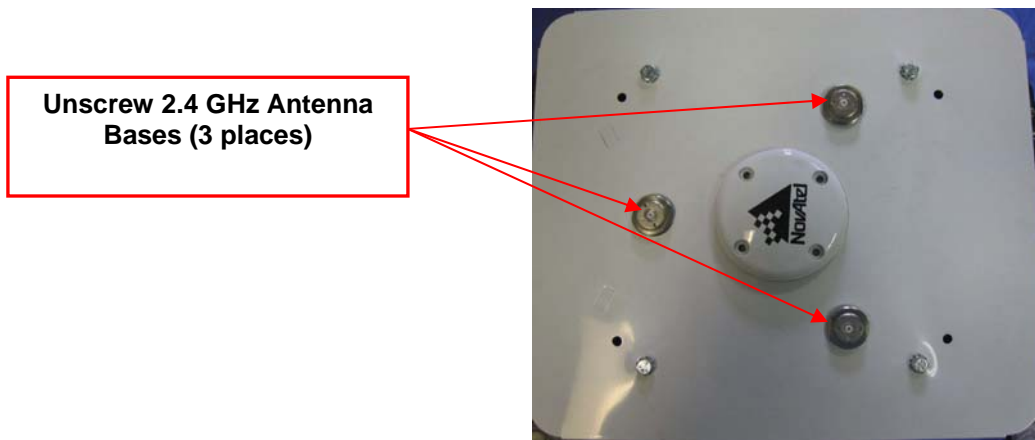
C) Remove antenna plate held on by 4 bolts.



D) Remove the four (4) antenna cables from the WhereTrack Module

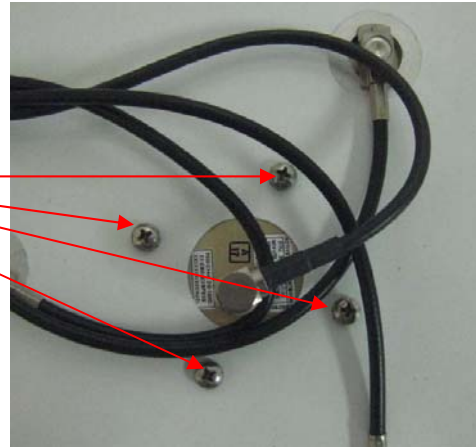


E) Remove the three 2.4 GHz Antenna bases and from the Antenna Plate by unscrewing from the front side.



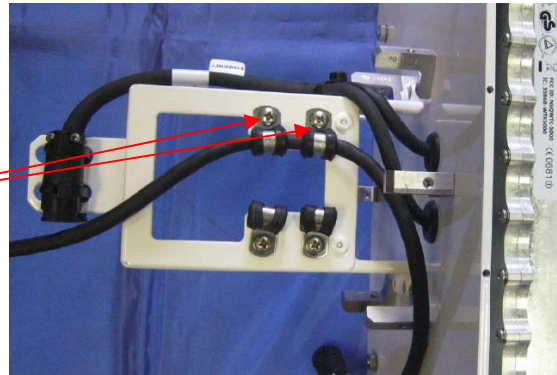
- F) Unscrew the cable from the GPS Antenna then remove the GPS Antenna by unscrewing four (4) screws.

**Remove four (4) screws**



- G) Remove 46-Foot cable from Compass Bracket by unscrewing two (2) Cable Clamps.

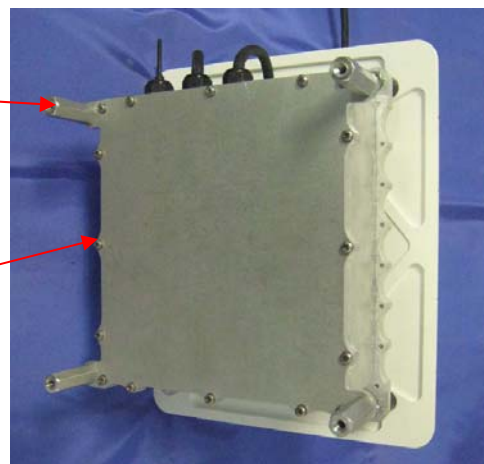
**Remove two (2) Cable Clamps**



- H) Remove four (4) Standoff's from the WhereTrack Module. Remove the Cover by unscrewing sixteen (16) screws.

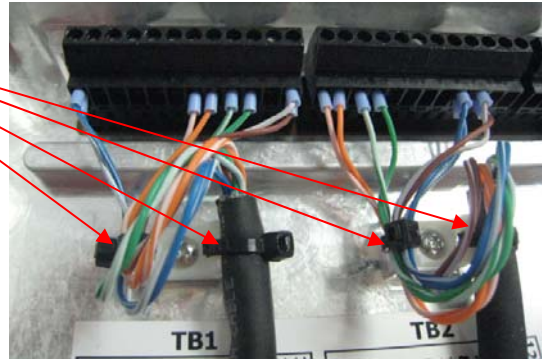
**Remove four (4) standoff's**

**Remove sixteen (16) screws**



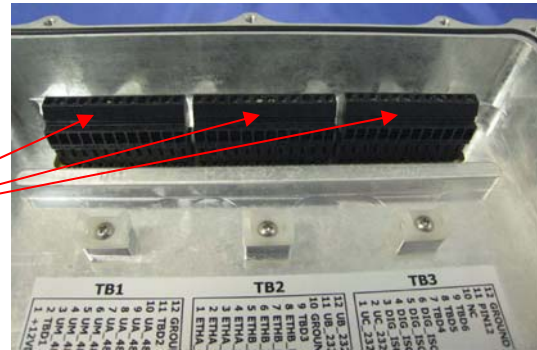
- I) Disconnect cables from the WhereTrack Module by unscrewing the wires from the terminal block. Cut the cable ties (4 places).

**Cut Cable Ties four (4) places**



- J) Remove three (3) Terminal Connectors from PCBA by pulling, with force, straight up.

**Remove by pulling straight up three (3) connectors**



- K) Remove the WhereTrack Module from the Bottom Plate by unscrewing four (4) nuts.

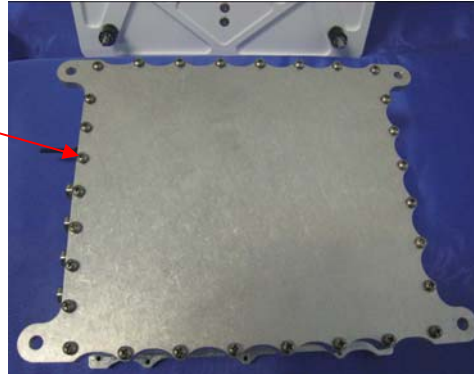
**Unscrew four (4) Nuts**





L) Remove the back cover from the WhereTrack Module by unscrewing 29 screws.

Unscrew twenty-nine (29) Screws



M) Remove nine (9) Cable Assemblies and four (4) Printed Circuit Board Assemblies from the WhereTrack Module.

Remove nine (9) Cable Assemblies

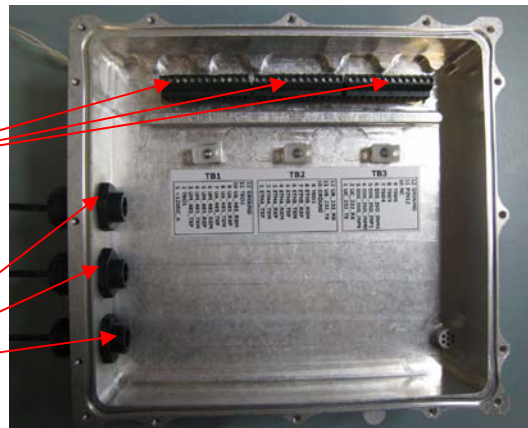
Remove three (4) PCBA's



N) Remove three (3) Cable Glands and 3 Terminal Strip Connectors from WhereTrack Unit.

Remove three (3) Terminal Strip Connectors

Remove three (3) Cable Glands





O) Remove the Compass Bracket and six (6) Mounting Brackets from the Mass Plate.

**Remove Compass  
Bracket**

**Remove six (6) Mounting  
Brackets**

