

# ZD220/ZD230

What is Included:



Printer  
Impresora  
Imprimante



Power Supply  
Fuente de alimentación eléctrica  
Bloc d'alimentation



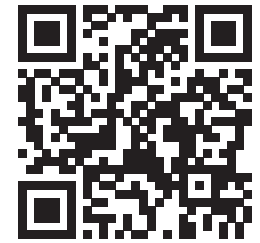
USB Cable  
Cable USB  
Câble USB

Not Included:



Labels  
Etiquetas  
Étiquettes

**Genuine Zebra Supplies**  
**Suministros Zebra genuinos**  
**Consommables de marque Zebra**  
[www.zebra.com/supplies](http://www.zebra.com/supplies)



Scan for Help



[www.zebra.com/zd200d-info](http://www.zebra.com/zd200d-info)



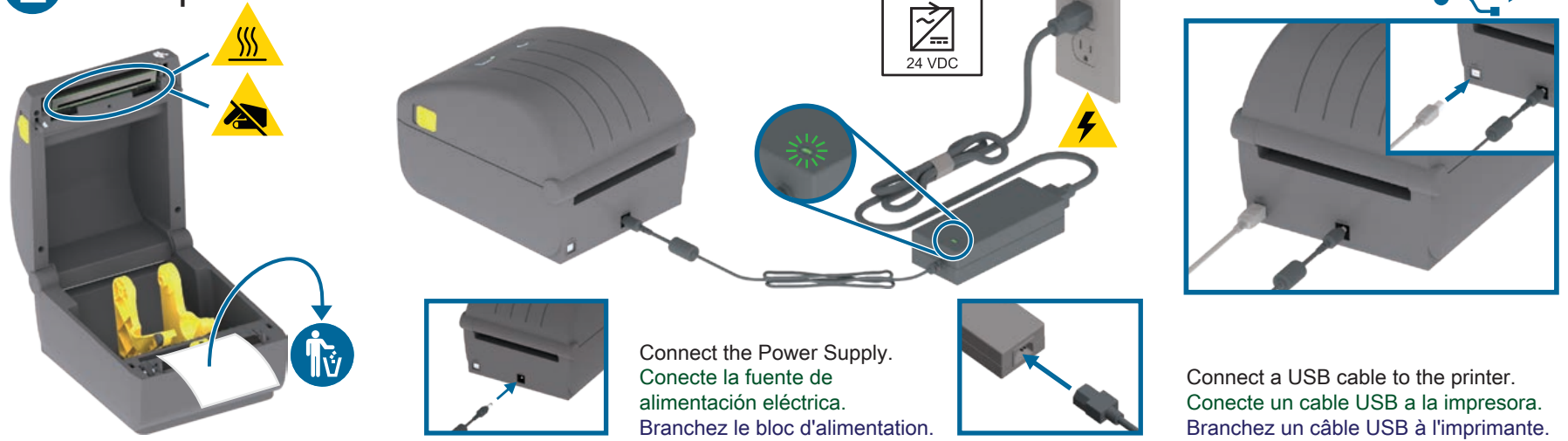
**1** Install  
Software

[www.zebra.com/setup](http://www.zebra.com/setup)

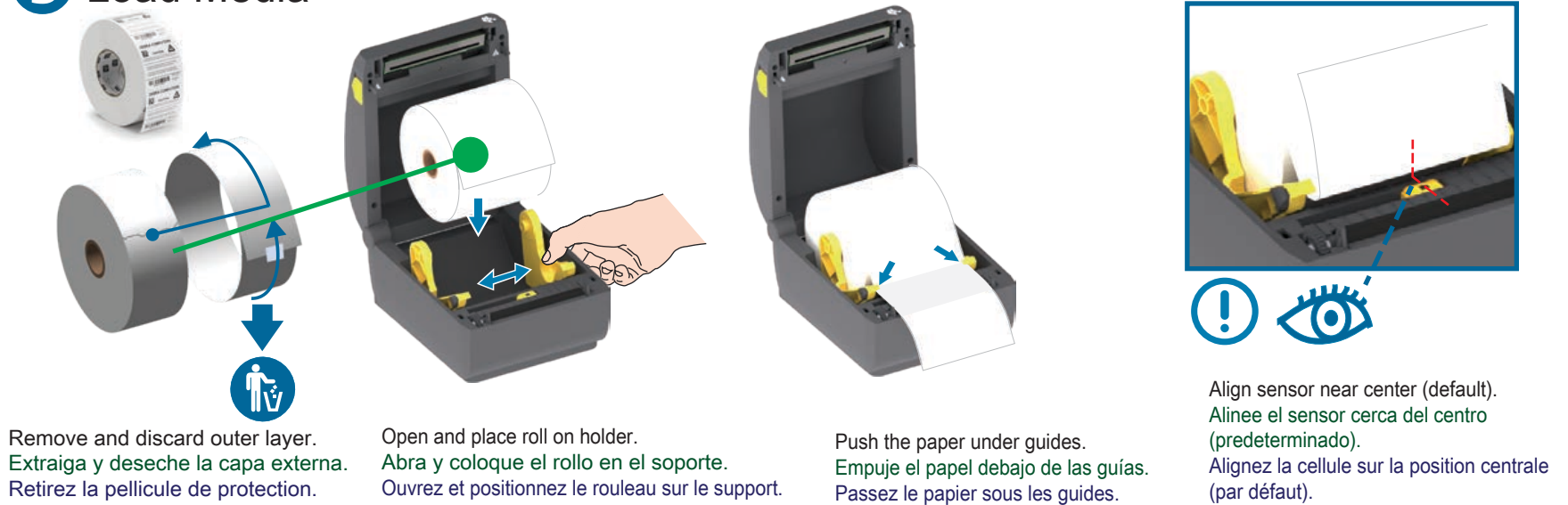


Download and Install Zebra Setup Utilities  
Includes Windows Printer Driver Files  
Descargue e instale Zebra Setup Utilities (Utilidades de configuración de Zebra)  
Incluye archivos del controlador de la impresora de Windows  
Téléchargez et installez Zebra Setup Utilities.  
Fichiers des pilotes d'impression Windows inclus.

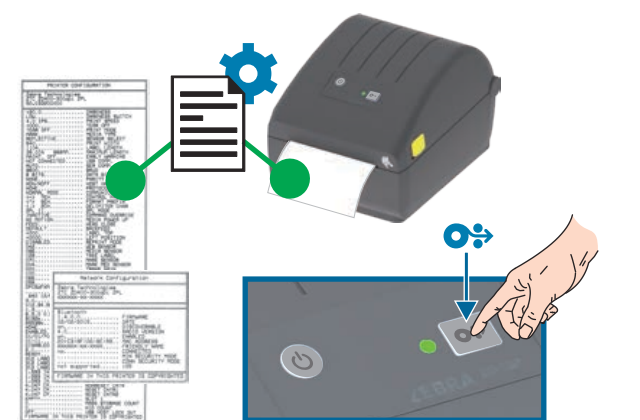
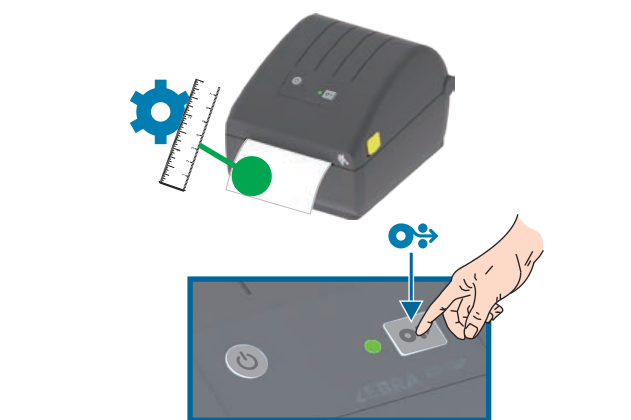
## 2 Set Up Your Printer



## 3 Load Media



## 4 Power On and Print

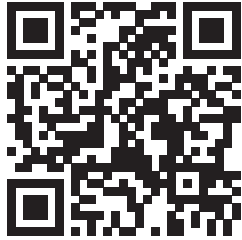


5



# Register / Regístrate / S'enregistrer

[www.zebra.com/register](http://www.zebra.com/register)



This is a Zebra QuickHelp QR Code

Este es un código QR de Zebra QuickHelp

Voici un code QR permettant d'accéder à une page d'aide rapide Zebra

You will find them on your Zebra product and documentation. Open the camera app on your smart mobile device and point it at the QR code to view helpful content in a browser.

Los encontrará en su producto y documentación de Zebra. Abra la aplicación de cámara en su dispositivo móvil inteligente y apúntelo al código QR para ver contenido útil en un navegador.

Vous en trouverez un sur la documentation et sur votre produit Zebra. Pour afficher le contenu de l'aide dans un navigateur, activez la caméra de votre appareil mobile et visez le code QR.

# Get Help: Obtenga ayuda: [www.zebra.com/zd200d-info](http://www.zebra.com/zd200d-info) Obtenir de l'aide:

The screenshot shows the Zebra support website interface. At the top, there are navigation tabs: How-To Videos, Drivers, Firmware, Software, Developer Tools, Manuals, and Knowledge Articles. Below the tabs, there are four main sections:

- HOW-TO VIDEOS:** Contains three video thumbnails with captions: "Unpacking your printer", "Identifying the features of your printer", and "Getting Started".
- DRIVERS:** A "RECOMMENDED" section for "ZebraDesigner driver 32/64 bit. Certified for Windows." with a "Download 27 MB" button. It also lists supported operating systems.
- MANUALS:** A dropdown menu for "English (United States)" and two manual entries: "ZD620 and ZD420 Users Guide (en)" (Download 22 MB) and "Wired/Wireless Print Servers User Guide (en)" (Download 2 MB).
- KNOWLEDGE ARTICLES:** Lists "Types of Printer Profile Manager Enterprise (PPME) Licenses Available" and "Zebra Setup Utilities (ZSU) Download". A "Search All Articles" button is at the bottom right.

At the bottom of the screenshot, there are two sections: "ZEBRA ONECARE" with a cloud icon and text about productivity, and "REQUEST A REPAIR" with a person icon and text about repair services.



NA and Corporate Headquarters  
+1 800 423 0442  
[inquiry4@zebra.com](mailto:inquiry4@zebra.com)

Asia-Pacific Headquarters  
+65 6858 0722  
[contact.apac@zebra.com](mailto:contact.apac@zebra.com)

EMEA Headquarters  
[zebra.com/locations](http://zebra.com/locations)  
[contact.emea@zebra.com](mailto:contact.emea@zebra.com)

Latin America Headquarters  
+1 847 955 2283  
[la.contactme@zebra.com](mailto:la.contactme@zebra.com)

Printed In China



[www.zebra.com/locations](http://www.zebra.com/locations)

Zebra and the stylized Zebra head are trademarks of Zebra Technologies Corporation, registered in many jurisdictions worldwide. All other trademarks are the property of their respective owners. ©2019 Zebra Technologies Corporation and/or its affiliates. All rights reserved.



212096-101