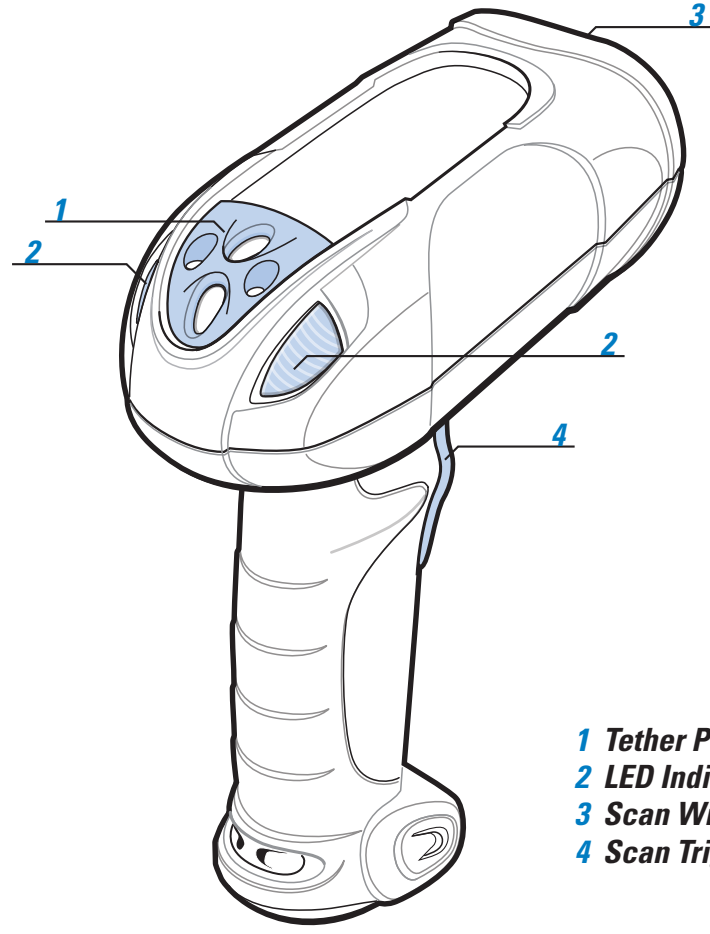


LS3578

Quick Start Guide

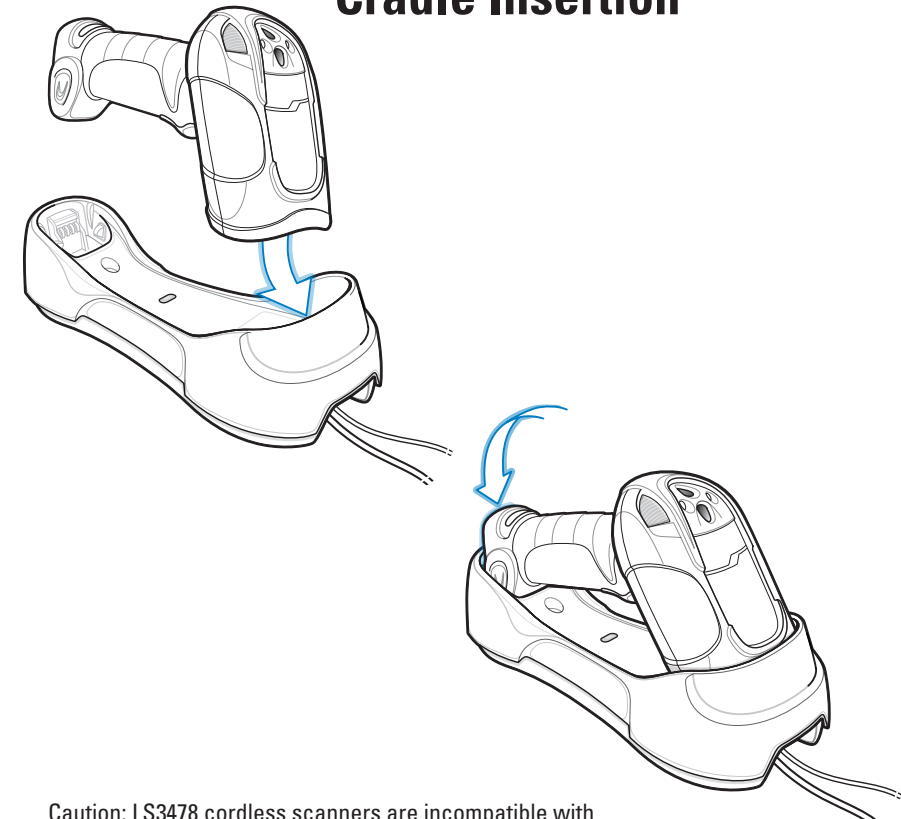
<http://www.zebra.com/ls3578>
See Product Reference Guide for more information

POST IN WORK AREA



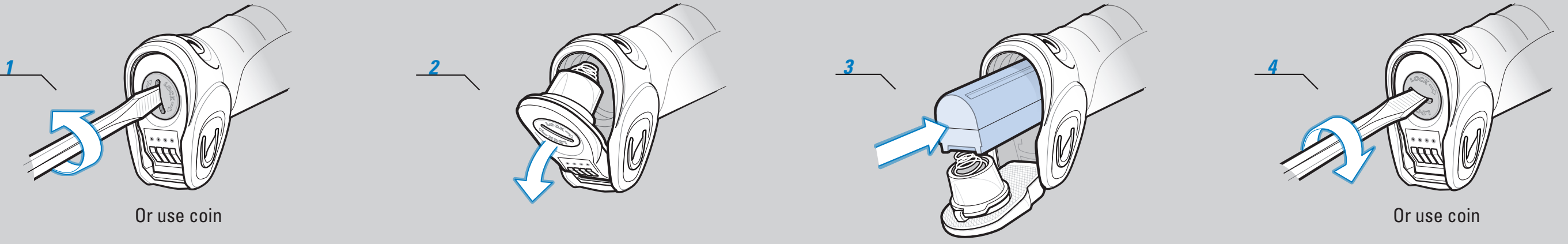
- 1 Tether Plate
- 2 LED Indicators
- 3 Scan Window
- 4 Scan Trigger

Cradle Insertion



Caution: LS3478 cordless scanners are incompatible with STB3508/3578 cradles. LS3578 cordless scanners are incompatible with STB3408/3478 cradles.

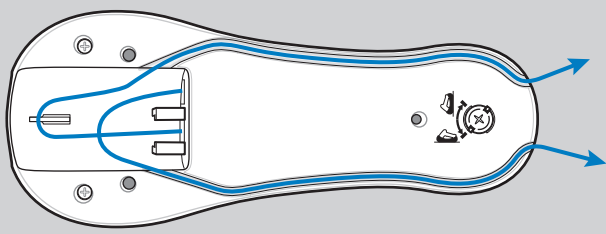
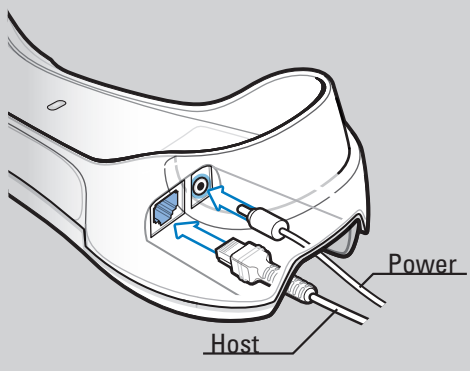
BATTERY INSERTION/REMOVAL



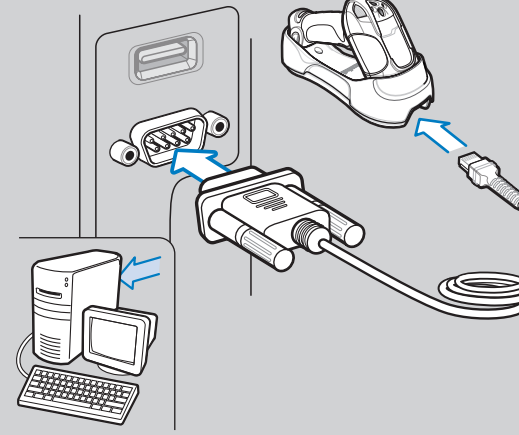
HOST INTERFACES

NOTE: Cables may vary depending on configuration. When using an external power supply, insert the cable into the cradle first, then insert host cable. Connect power last.

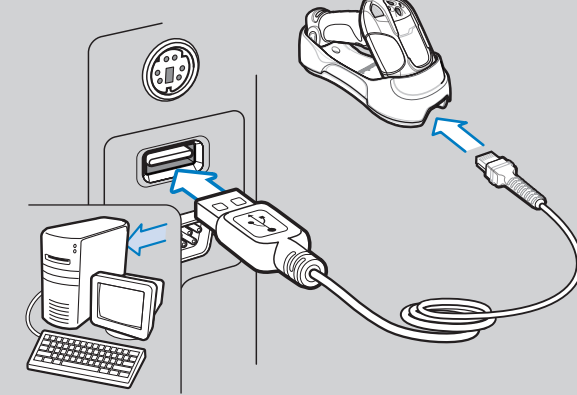
Cable Connection at Cradle



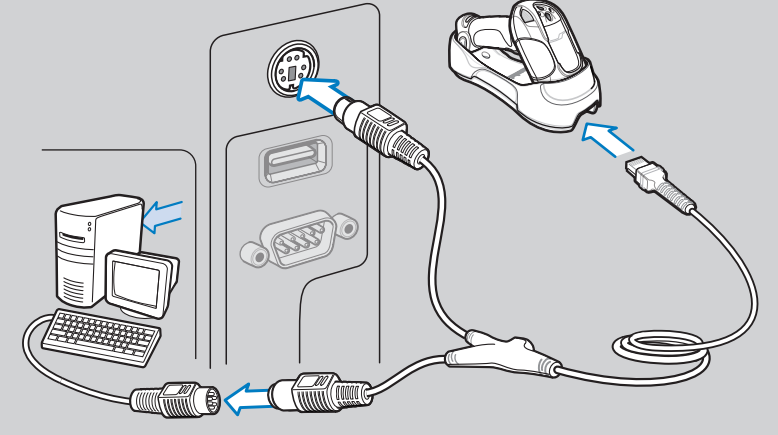
RS-232



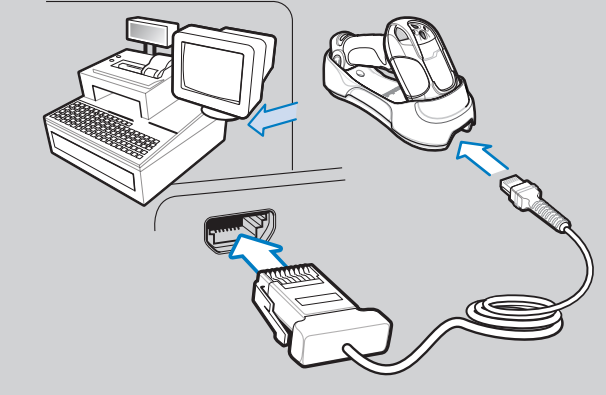
USB



Keyboard Wedge



IBM 46XX



TROUBLESHOOTING

Please refer to the LS3578 Product Reference Guide Troubleshooting section for further information.

Scanner not working

- No power to scanner
Check battery
- End cap not secured correctly
Turn end cap to secure

Scanner not decoding bar code

- Scanner not programmed for bar code type
Ensure scanner is programmed to read type of bar code being scanned
- Bar code unreadable
Ensure bar code is not defaced; try scanning test bar code of same bar code type

Scanner decoding bar code, but data not transmitting to host

- Scanner not paired to host-connected cradle
Pair the scanner to the cradle (using the PAIR bar code on the cradle)
- Cradle not programmed for correct host interface
Check scanner host parameters or edit options
- Interface cable is loose
Check for loose cable connections

If data is still not transmitting to host, it may be necessary to recycle power on the cradle.

Scanned data incorrectly displayed on host

- Paired cradle host communication parameters do not match the host's parameters
Check cradle host parameters or edit options

LS3578 PROGRAMMING BAR CODES

Set Defaults

Note: The scanner connection to the cradle is dissolved when Set Defaults is scanned.



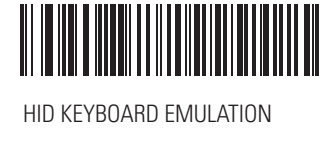
SET DEFAULTS

Unpairing/Disconnection



UNPAIR/DISCONNECT

USB Host Types



HID KEYBOARD EMULATION



IBM HAND-HELD USB

IBM 46XX Host Types

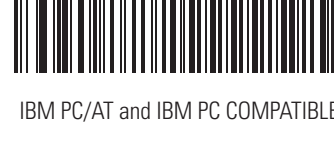


PORT 5B



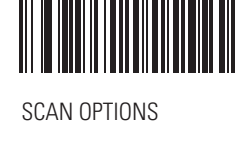
PORT 9B

Keyboard Wedge Host Types



IBM PC/AT and IBM PC COMPATIBLE

Carriage Return/Line Feed



SCAN OPTIONS



<DATA>-<SUFFIX>



ENTER

Radio Communications Host Types



CRADLE HOST



SERIAL PORT PROFILE (SLAVE)



BLUETOOTH KEYBOARD EMULATION (HID SLAVE)



SERIAL PORT PROFILE (MASTER)

RS-232 Host Types



STANDARD RS-232



NIXDORF RS-232 MODE B



NIXDORF RS-232 MODE A



ICL RS-232



FUJITSU RS-232



OPOS/JPOS

